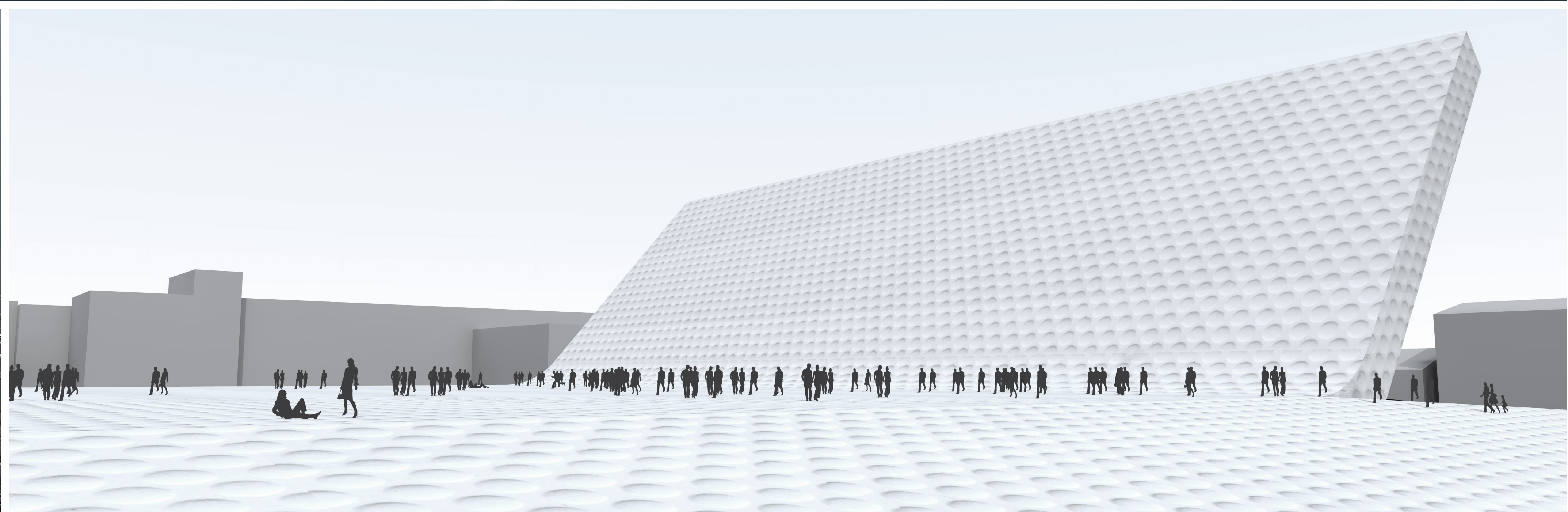
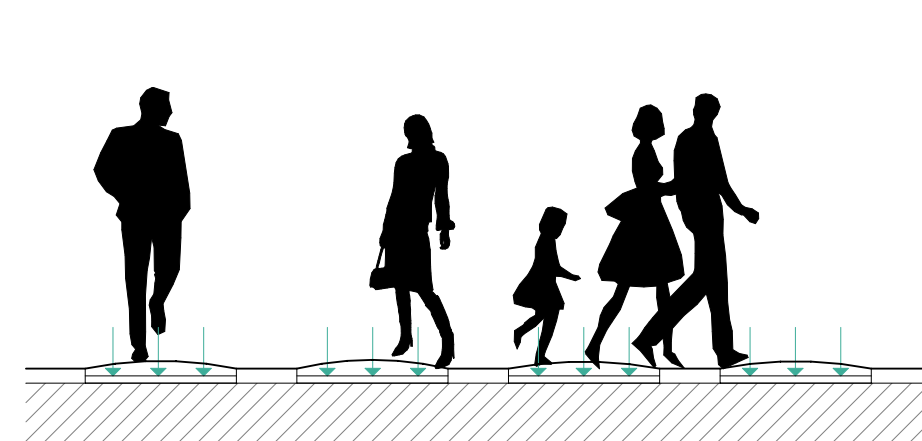
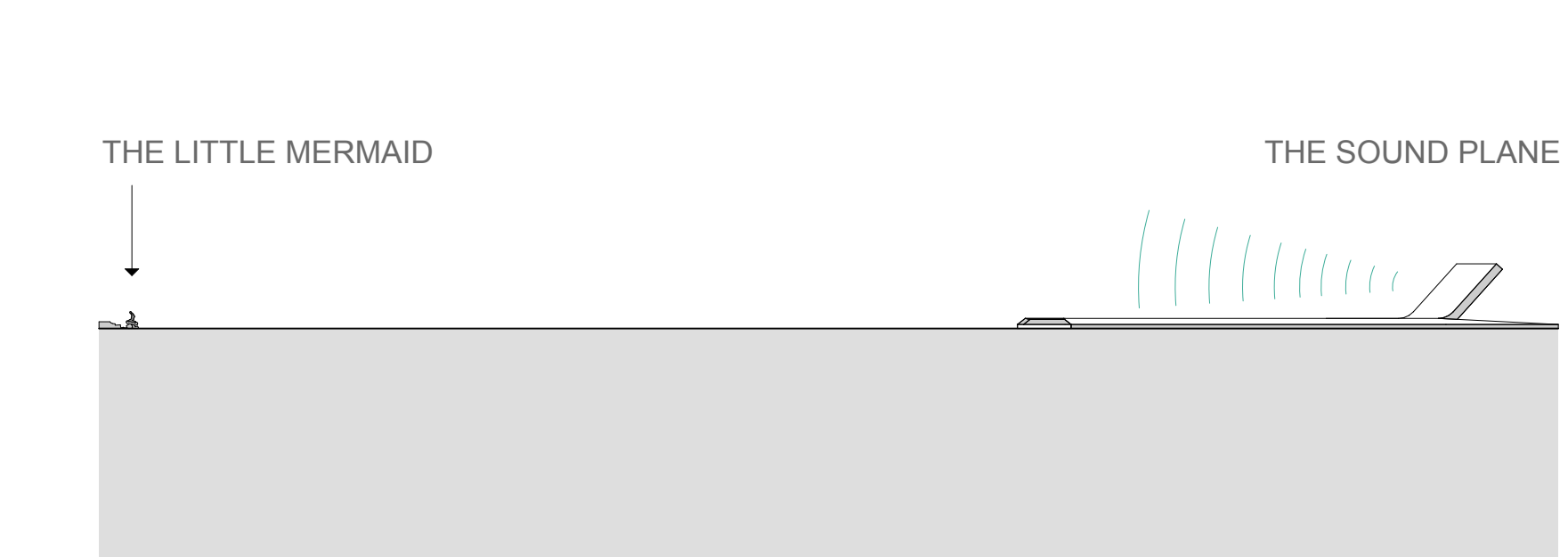


HUGE MUSIC INSTRUMENT GENERATING ENERGY IN RAFSHALEØEN, COPENHAGEN, DENMARK

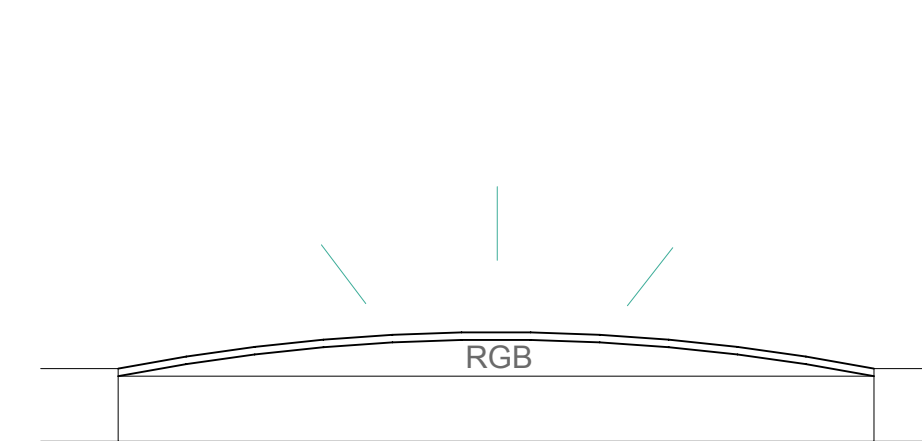
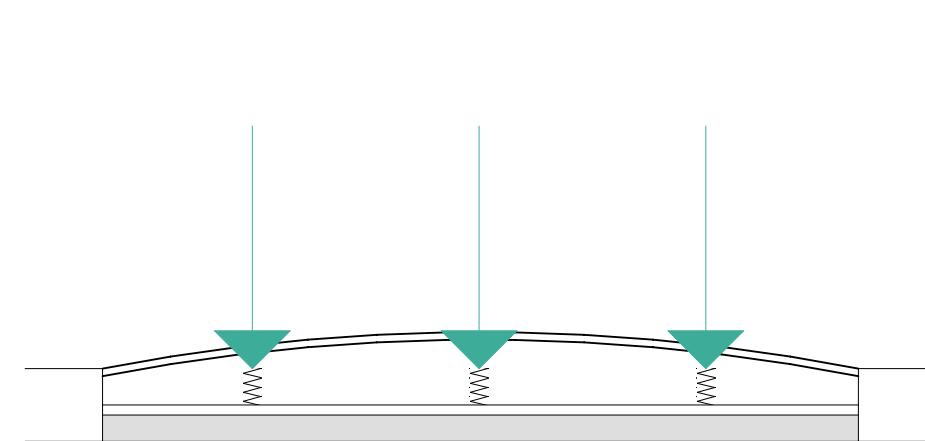


**INTERACTIVE SURFACE OF THE PLANE GENERATES ENERGY FROM FOOTSTEPS**

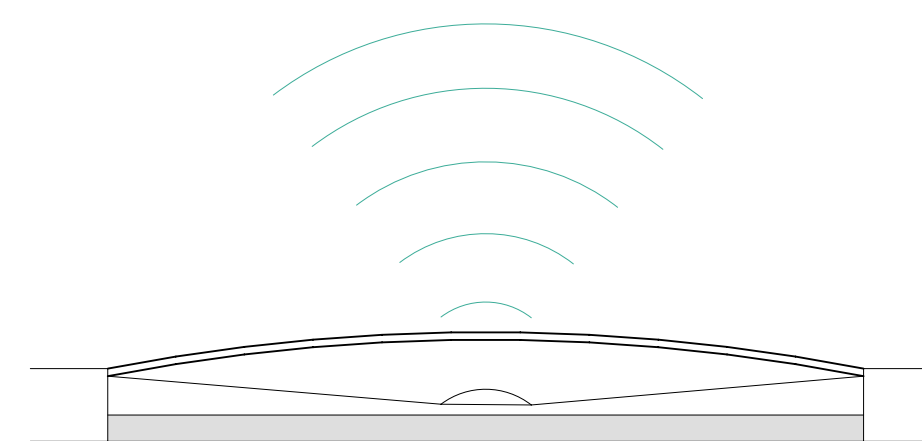
THE WATTAGE A BODY GENERATES IS POTENTIAL ENERGY, AND ONLY A SMALL PERCENTAGE OF IT CAN BE CAPTURED. NASA'S DEFENSE ADVANCED RESEARCH PROJECTS AGENCY (DARPA) ESTIMATES THAT A SINGLE FOOTSTEP COULD PROVIDE 1 TO 2 WATTS [SOURCE: SPACE.COM]. TURN A SINGLE FOOTSTEP INTO 84162203 STEPS AND A GROUP OF PEOPLE COULD GENERATE ENOUGH POWER TO LAUNCH SPACE SHUTTLE [SOURCE: CHRISTIAN SCIENCE MONITOR].



MODULES WITH PIEZOELECTRIC TECHNOLOGY ARE INSTALLED IN THE SURFACE OF THE PLANE. THE MODULES MADE FROM CRYSTALS PRODUCE SMALL ELECTRICAL CURRENT WHEN SQUASHED. THEY TURN VISITOR'S POTENTIAL ENERGY TO ELECTRICITY, CURRENT IS FED INTO THE ELECTRIC GRID.



LED LIGHTING CAN BE INSTALLED IN SOME MODULES OF THE SURFACE



SOUND AMPLIFICATION EQUIPMENT IS INSTALLED IN SOME MODULES OF THE SURFACE AT THE FOLDED SIDE OF THE PLANE